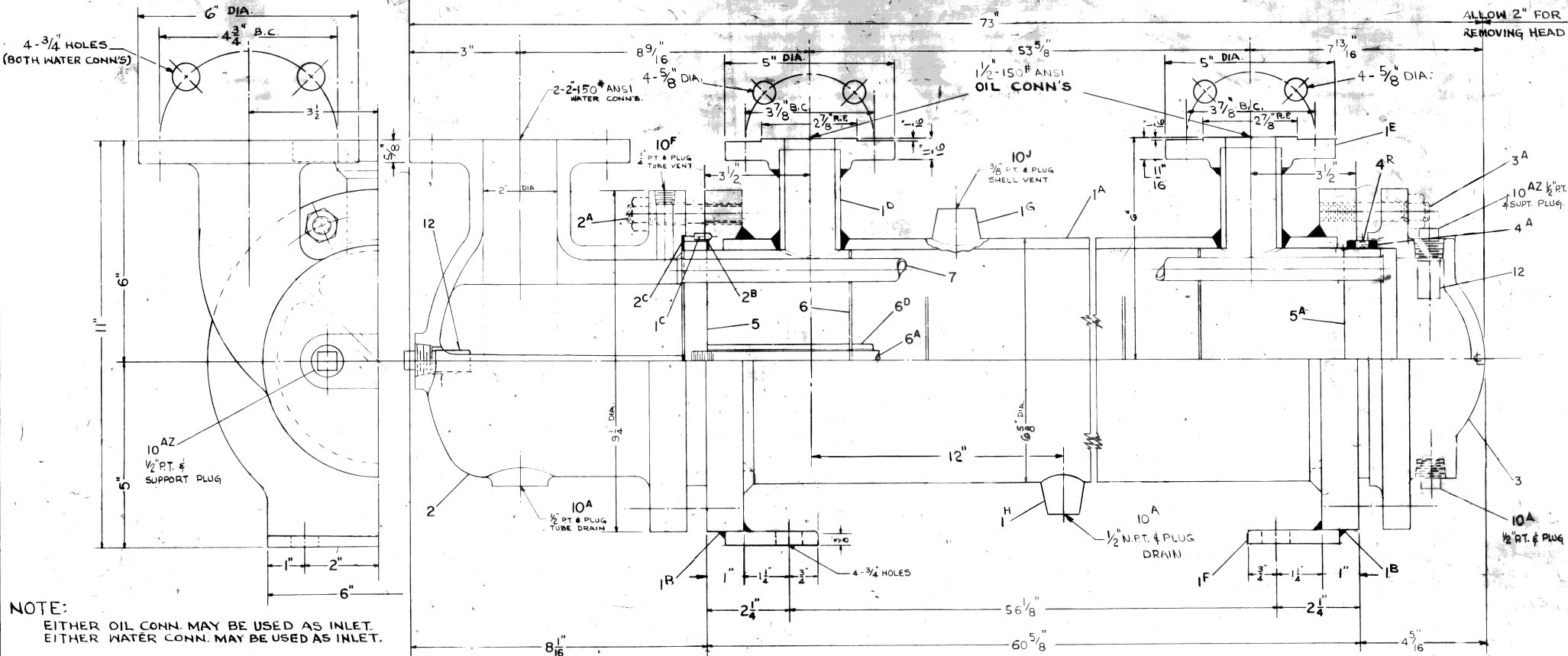


ALLOW 55" FOR REMOVING BUNDLE

ALLOW 2" FOR REMOVING HEAD



NOTE:
EITHER OIL CONN. MAY BE USED AS INLET.
EITHER WATER CONN. MAY BE USED AS INLET.

HORIZONTAL INSTALLATION

ITEM	PART	MATERIAL	SPEC.	REMARKS	ITEM	PART	MATERIAL	SPEC.	REMARKS	CONDITIONS	SHELL SIDE	TUBE SIDE
1A	SHELL	STEEL	SA53 GR. B		5	MAIN TUBE SHEET	NIAL. BRZ.	ASTM B-171.	ALY. 62B	DESIGN PRESSURE	100 PS.I.G	125 PS.I.G
1C	LOCATION PIN		COML.		5A	FLOATING TUBE SHEET				DESIGN TEMPERATURE	200°F	200°F
1B	SHELL END FLANGE	STEEL	SA285 GR. C		6	BAFFLE	BRASS	COML.		HYDROSTATIC TEST PRESS.	150 PS.I.G	190 PS.I.G
1D	SHELL NOZZLE		SA53 GR. A		6A	SPACER ROD						
1E	SHELL NOZZLE FLANGE		ASTM A181 GR.1		6D	BAFFLE SPACER						
2	MAIN HEAD	VAL. BRZ.	ASTM B61		7	TUBES - 44 REQ'D.	90/10 CU. NI.	ASTM B-359	5/8" O.D. x #18 B.W.G x 62" LG. TRUFIN 60-194049S/T OR EQUAL			
2A	STUD & NUT	STEEL	ASTM A193 B7	NUT-ASTM A194 CL2H	10A	PIPE PLUG	BRASS	COML.				
2B	GASKET	ASBESTOS	DURABLA		10F	PIPE PLUG						
2C	GASKET				10J	PIPE PLUG						
1F	FEET	STEEL	COML.		1H	THREDOLET	STEEL	ASTM A105G2				
3	FLOATING HEAD	VAL. BRZ.	ASTM B61		1G	THREDOLET						
3A	STUD & NUT	STEEL	ASTM A193 B7	NUT-ASTM A194 CL2H	10AZ	SUPPORT PLUG	BRASS	COML.				
4A	PACKING - 2 RINGS	SYN. RUB.	COML.		12	ZINC	ZINC					
4R	PACKING RING	BRASS										

CALC. DRY WT. = 475 LBS.

ANDALE CO.	
LANSDALE, PA.	
DWR. H.N.	ISSUED 1-30-76
CK'D J.M.C.	SCALE CH?
P. O. 76026	EST.

REF- E800SR2

1	REV. 3-24-76 H.N. JM	2		3	
1/2 OIL CONN'S WERE 2" RELOCATED DRAIN AS REQ'D. BY CUSTOMER					

DIMENSIONS & ASSEMBLY
6-2-60 OIL COOLER
TYPE 201Y

E 8541R1